

# AUTOMATION: GENERAL SERVICES

EXPANSEELECTRICAL.COM

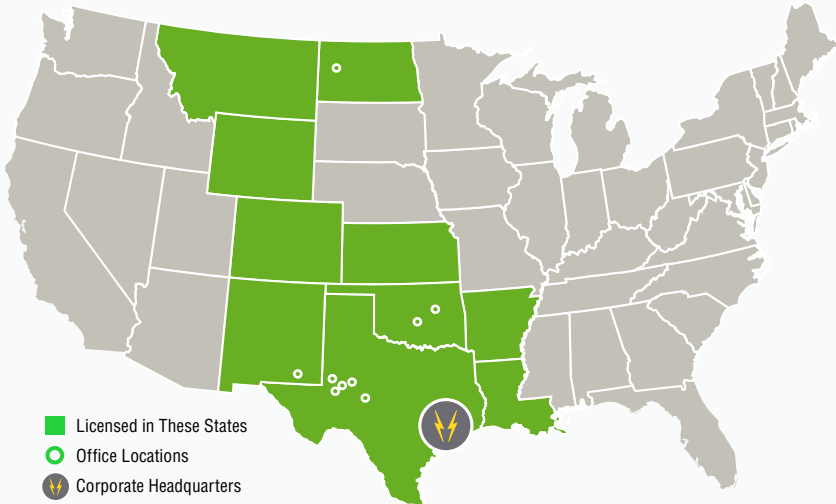
## Turnkey Automation & Control Services with Expanse

Expanse hires qualified, trained and experienced technicians to perform turnkey automation and control work. Our capabilities include, but are not limited to:

- Custom PLC & HMI Development and Design
- Installation & Maintenance
- Programming
- Automation & Telemetry System Upgrades
- SCADA & Remote Monitoring
- Process Instrument Sales & Support
- Networking Communications
- Troubleshooting

### *Operating Where You Need Us*

We provide comprehensive automation services to customers throughout the nation's major oil and natural gas producing regions. Our experienced technicians are strategically located to support our customers wherever they need us.



### *The Expanse Advantage*

- In-House Engineering Department
- Oil & Gas Process Knowledge and Expertise
- Path Study Services
- Certified UL Control Panel Manufacturer
- Service What We Sell
- Strong Manufacturer Relationships
- Existing MSAs with Majority of Operators

# Capabilities

## Turnkey Services

Our in-depth automation department can design and build automated systems from conception to inception, including complete mechanical processes. In addition, our automation technicians work hand-in-hand with our licensed electricians, providing customers comprehensive service and ultimately value that saves time and resources. Expanse is the one-stop-shop provider customers need.

### EQUIPMENT WE SERVICE

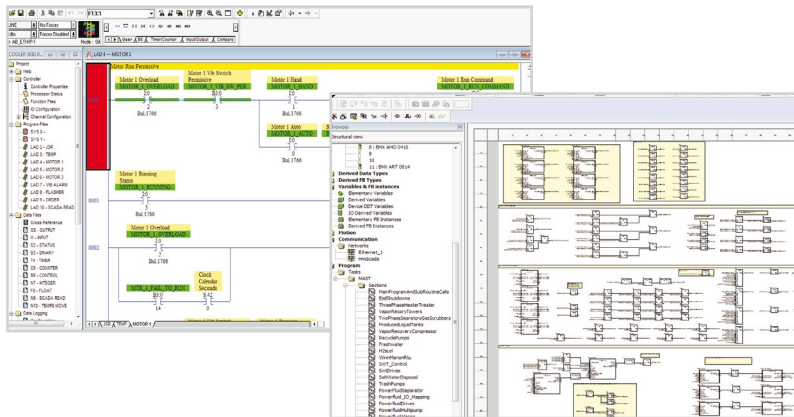
- Process Instruments
- Programmable Logic Controllers
- Human Machine Interface
- Variable Frequency Drives
- Telemetry Products
- Motor Operated Valves
- AC Motor Diagnostics
- Power Monitoring Equipment
- Harmonic Filters
- Leak Detection Equipment
- Fiber Optic and Network Equipment

### MONITORING SERVICES

- SCADA
- Remote Support via Secured Private Network
- Path Studies

### INSTRUMENTATION & ELECTRICAL SERVICES

- Loop Checks
- Terminations
- Fiber Fusion Splicing
- Harmonic Testing
- Primary Injection Testing



## Major Manufacturing Expertise

Expanse utilizes and has experience working with major manufacturers such as:

- ABB
- Allen-Bradley
- Eaton
- Emerson
- Idec
- Phoenix Contact
- Red Lion
- Scadapack
- Schneider Electric
- Siemens
- Signal Fire
- Vega
- Yaskawa

## Certifications

- UL508A
- UL698
- UL HazLoc



## Why Expanse?

- 24/7 Emergency Response
- Delivering Exceptional Service for 70+ Years
- Turnkey Services & Solutions
- Experienced Craftsmen
- Local Expertise in National Scale
- Certified Service Provider Status
- Strong Global Manufacturer Relationships
- Customer Support Across Geographical & Operational Spectrums



### NEW MEXICO

Carlsbad

### NORTH DAKOTA

Williston

### OKLAHOMA

Oklahoma City • Tulsa

### TEXAS

Andrews • Big Spring • Houston  
Midland • Odessa • San Angelo

FOR MORE INFORMATION

832.399.0054