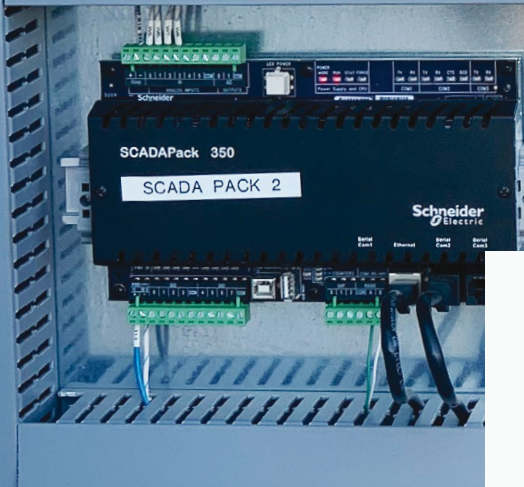
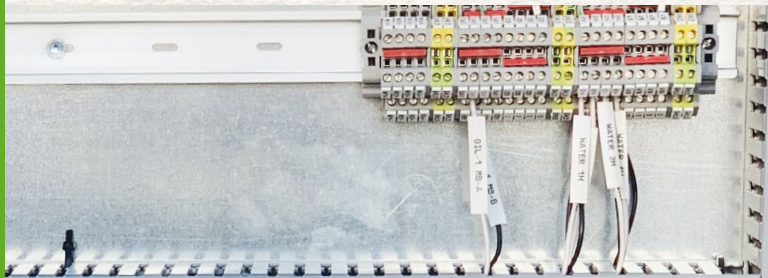


**AUTOMATION:  
RTUs WITH  
REMOTE CONNECT**







[EXPANSEELECTRICAL.COM](http://EXPANSEELECTRICAL.COM)

# *Simplify Your RTU, PLC and Flow Computer Integration with Expanse*

In the past, setting up gas flow measurement systems required multiple components. Typically, you could only find best-in-class flow computers that lacked good programmable logic controller (PLC) functionality or vice versa. Expanse now offers the best of both worlds in one device, combining Schneider Electric's superior PLC software (Unity Pro) with the SCADAPack RTU and Reaflo. The result is a single unit, versatile flow computer that is easily integrated and well suited to a wide variety of oil and gas, water, and wastewater applications.

This combined unit is ideal for automation applications requiring flow measurement meeting API compliance requirements, a PLC for process control and an RTU for SCADA applications. The joint hardware and software technologies provide custody transfer flow measurement for one to ten flow runs. It converts an RTU into a full functioning flow computer while enhancing the RTU's process logic capability.

**BENEFITS OF EXPANSE'S COMBINED FLOW COMPUTER PLC DEVICE**

|   |   |   |   |
|---|---|---|---|
|  |  |  |  |
| Combines Best-In-Class Technology and Software with Simple User Interface           | Produces Significant Cost Savings by Eliminating Need for Separate Flow Computer    | Minimizes Footprint by Saving Space on Site   | Easy Setup and Integration Process  |



***The Expanse Advantage***

- Turnkey Services
- Schneider Electric Alliance Partner
- Advanced Automation and Control Integration and Programming Insight
- Certified UL Control Panel Manufacturer
- Electrical Schematics with Every Order
- Coordinated As-Built Drawings
- Service What We Sell

# Capabilities

## Product Highlights

- Flexible protocol implementation
- Tagged (named) object database
- Microsoft® Excel export and import of database objects
- X70 Logic editor
- Remote maintenance
- Remote ready hardware
- Intuitive and convenient environment for configuration, diagnostics, and field capture of flow data
- Calibration and configuration wizards for easy and effective setup, field calibration, and verification
- API 21.1 and 21.2-compatible audit trails and flow calculations facilitate data capture and reporting
- Multi-variable sensor/transmitters provide high-accuracy measurements directly to the flow computer
- Support for the latest generation of SCADAPack Smart RTUs



## Applications: Oil & Gas

- Upstream gas and liquid production measurement and automation
- Production optimization
- Separator measurement
- Allocation and proration measurement
- Natural gas measurement in midstream and gas transmission
- Support for Realflo™ Flow Computer, SCADAPack Smart RTU-based flow measurement application, providing flow computation for natural gas, hydrocarbon liquids and produced water
- Tank monitoring & automation
- Well test automation
- Well production and optimization

## Applications: Water & Wastewater

- Leakage detection
- Equipment monitoring & control
- Water quality monitoring
- Irrigation
- DMAs (District Metering Areas), PMAs (Pressure Monitoring Areas)
- Monitoring flow / level / pressure and temperature, and many other

## Why Expanse?

- 24/7 Emergency Response
- 70+ Years of Experience
- Turnkey Services & Solutions
- In-House Engineering Department
- Experienced Craftsmen
- Local Expertise on National Scale
- Customer Support Across Geographical & Operational Spectrums

**EXPANSE**  
← ELECTRICAL CO. →

### NEW MEXICO

Carlsbad

### NORTH DAKOTA

Williston

### OKLAHOMA

Oklahoma City • Tulsa

### TEXAS

Andrews • Big Spring • Houston

Midland • Odessa • San Angelo

FOR MORE INFORMATION

832.399.0054